

COMBI DOCK TYPE

MV "COMBI DOCK I" : CALL SIGN: V2DV7 IMO NO: 9400473
 MV "COMBI DOCK III": CALL SIGN: V2PX8 IMO NO: 9432828

T/C OWNERS:

COMBI DOCK CHARTERING - 4220 KORSOER - DENMARK
 PORT OF REGISTRY: ST. JOHNS
 FLAG: ANTIGUA & BARBUDA



MAIN PARTICULARS

CLASS

GL + 100 A5E INF3 IW NAV- OC; IW; BMW- 5; STRENGTHENED FOR HEAVY CARGO, SEMI SUBMERSIBLE VESSEL; RO/RO SHIP; CONTAINER FITTED, DP 1

BUILDERS

LLOYD WERFT, BREMERHAVEN, GERMANY
 JANUARY 2008 / JANUARY 2009

REGISTER TONNAGE

TYPE	INTERNATIONAL
GROSS	17,341
NET	5,203

DIMENSIONS

LENGTH OVER ALL (BOW TO STERN)	163.00 M
LENGTH OVER ALL (INCL. CRANE OVERHANG)	169.40 M
LENGTH BETWEEN PP	147.60 M
BREADTH MOULDED	25.40 M
DESIGN DRAFT WITH OPEN HATCH	6.60 M
DRAFT FULLY LOADED SUMMER	6.60 M
DOCKING DRAFT	11.00 M

DEAD WEIGHT CAPACITIES

DEAD WEIGHT AT 5,60 M DRAFT	ABT. 7,600 MTS
DEAD WEIGHT AT 6,60 M DRAFT	ABT. 11,000 MTS

CONTAINER CAPACITIES

TOTAL CAPACITY 20' x 8' x 8'6"	1383
HEREOF: IN CARGO HOLD	420
ON DECK	963

STACKLOAD

TANKTOP	100 TS EACH 20' 140 TS EACH 40'
DECK	50 TS EACH 20' 65 TS EACH 40'

HATCH (DOCKSIZE)

BOXSHAPED	132.00 X 18.00 M X 9.40 M
HATCH	132.60 X 25.40 M

STERNRAMP

750 MT - WIDTH 18,00 M x LENGTH 10,80 M WITHOUT FLAP / 13.80 M WITH FLAP

VESSEL CAN TRADE WITH OPEN HATCHES AND STERNRAMP.

CARGO HOLD

FITTED FOR DANGEROUS CARGO SOLAS -II-2, REG 19 DBC HOLDS FITTED WITH SMOKE DETECTORS, CO2 SYSTEM, SPRINKLER. PREPARED FOR MOON POOL.

CUBIC CAPACITIES IN HOLD

W/O TWEENDECK HATCH COVERS: 20900 CBM / 22800 CBM

CRANES

2 ELECTRO HYDRAULIC CRANES PORT SIDE 350 TS / 18 M & 100 TS / 26 M COMBINABLE UP TO 700 TS
 1 ELECTRO HYDRAULIC CRANE PORT SIDE 200 TS / 14 M & 80 TS / 31 M

DECK STRENGTH

TANKTOP	16.00 TS PER M2
TWEENDECK - HOLD	4.50 TS PER M2
HATCH COVER	2.55 TS PER M2

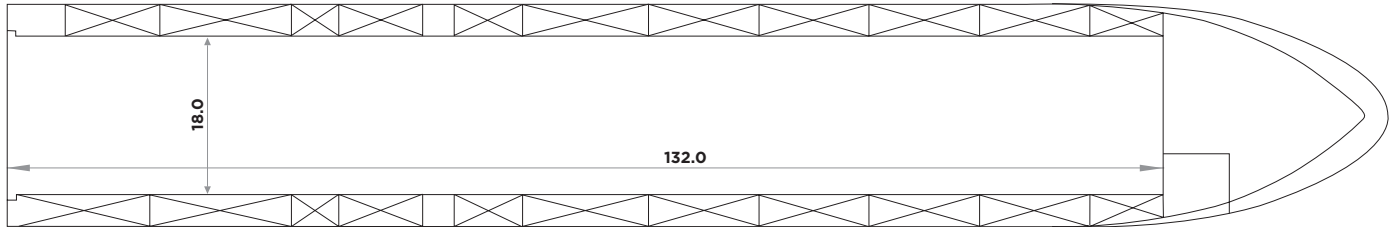
TANK CAPACITIES

FUELOIL	ABT. 1254.0 TS
MDO	ABT. 131.0 TS
FRESH WATER	ABT. 223.0 TS
BALLAST WATER	ABT. 17415.0 TS

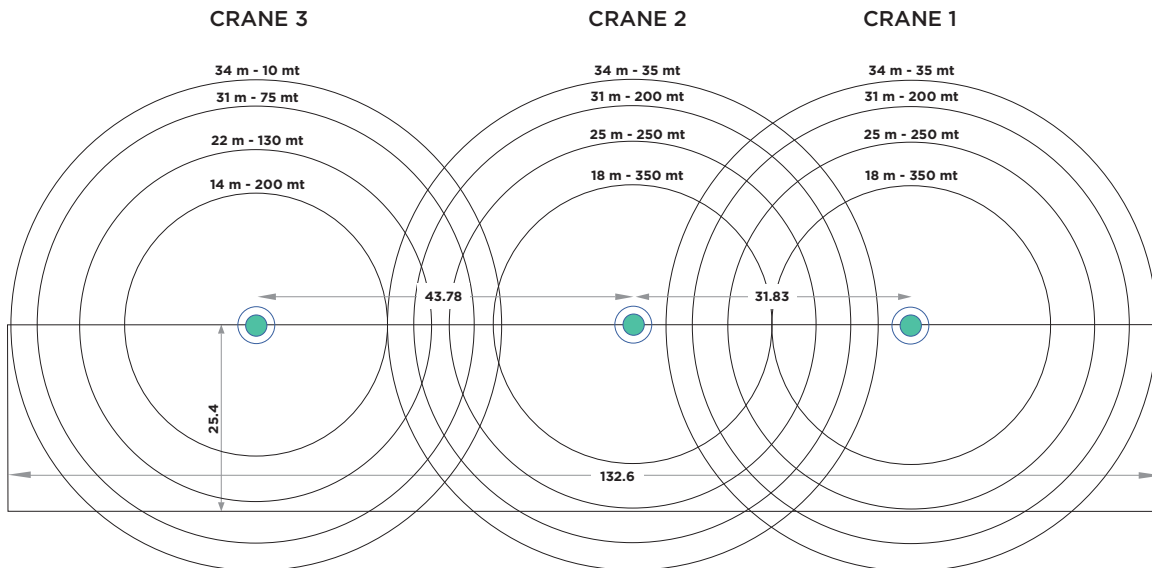
VESSEL EQUIPPED WITH TWIN SCREW AND 1X BOW THRUSTER

COMBI DOCK TYPE

TWEEN DECK / TANKTOP



WEATHER DECK



HOLD

