

## COMBI DOCK TYPE

MV "COMBI DOCK I" : CALL SIGN: V2DV7 IMO NO: 9400473  
 MV "COMBI DOCK III": CALL SIGN: V2PX8 IMO NO: 9432828

### T/C OWNERS:

COMBI DOCK CHARTERING - 4220 KORSOER - DENMARK  
 PORT OF REGISTRY: ST. JOHNS  
 FLAG: ANTIGUA & BARBUDA



## MAIN PARTICULARS

### CLASS

GL + 100 A5E INF3 IW NAV- OC; IW; BMW- 5; STRENGTHENED  
 FOR HEAVY CARGO, SEMI SUBMERSIBLE VESSEL; RO/RO  
 SHIP; CONTAINER FITTED, DP 1

### BUILDERS

LLOYD WERFT, BREMERHAVEN, GERMANY  
 JANUARY 2008 / JANUARY 2009

### REGISTER TONNAGE

TYPE	INTERNATIONAL
GROSS	17,341
NET	5,203

### DIMENSIONS

LENGTH OVER ALL (BOW TO STERN)	163.00 M
LENGTH OVER ALL (INCL. CRANE OVERHANG)	169.40 M
LENGTH BETWEEN PP	147.60 M
BREADTH MOULDED	25.40 M
DESIGN DRAFT WITH OPEN HATCH	6.60 M
DRAFT FULLY LOADED SUMMER	6.60 M
DOCKING DRAFT	11.00 M

### DEAD WEIGHT CAPACITIES

DEAD WEIGHT AT 5,60 M DRAFT	ABT. 7,600 MTS
DEAD WEIGHT AT 6,60 M DRAFT	ABT. 11,000 MTS

### CONTAINER CAPACITIES

TOTAL CAPACITY 20' x 8' x 8'6"	1383
HEREOF: IN CARGO HOLD	420
ON DECK	963

### STACKLOAD

TANKTOP	100 TS EACH 20' 140 TS EACH 40'
DECK	50 TS EACH 20' 65 TS EACH 40'

### HATCH (DOCKSIZE)

BOXSHAPED	132.00 X 18.00 M X 9.40 M
HATCH	132.60 X 25.40 M

### STERNRAMP

750 MT - WIDTH 18,00 M x LENGTH 10,80 M WITHOUT FLAP /  
 13.80 M WITH FLAP

### VESSEL CAN TRADE WITH OPEN HATCHES AND STERNRAMP.

### CARGO HOLD

FITTED FOR DANGEROUS CARGO SOLAS -II-2, REG 19 DBC HOLDS  
 FITTED WITH SMOKE DETECTORS, CO2 SYSTEM, SPRINKLER.  
 PREPARED FOR MOON POOL.

### CUBIC CAPACITIES IN HOLD

W/O TWEENDECK HATCH COVERS: 20900 CBM / 22800 CBM

### CRANES

2 ELECTRO HYDRAULIC CRANES PORT SIDE 350 TS / 18 M &  
 100 TS / 26 M COMBINABLE UP TO 700 TS  
 1 ELECTRO HYDRAULIC CRANE PORT SIDE 200 TS / 14 M &  
 80 TS / 31 M

### DECK STRENGTH

TANKTOP	16.00 TS PER M2
TWEENDECK - HOLD	4.50 TS PER M2
HATCH COVER	2.55 TS PER M2

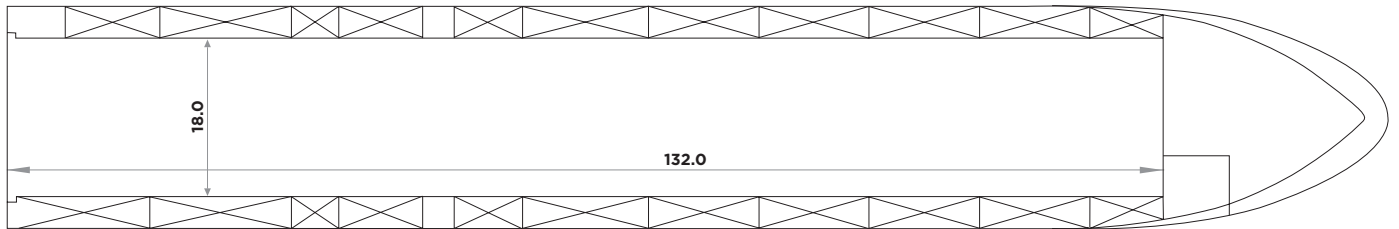
### TANK CAPACITIES

FUELOIL	ABT. 1254.0 TS
MDO	ABT. 131.0 TS
FRESH WATER	ABT. 223.0 TS
BALLAST WATER	ABT. 17415.0 TS

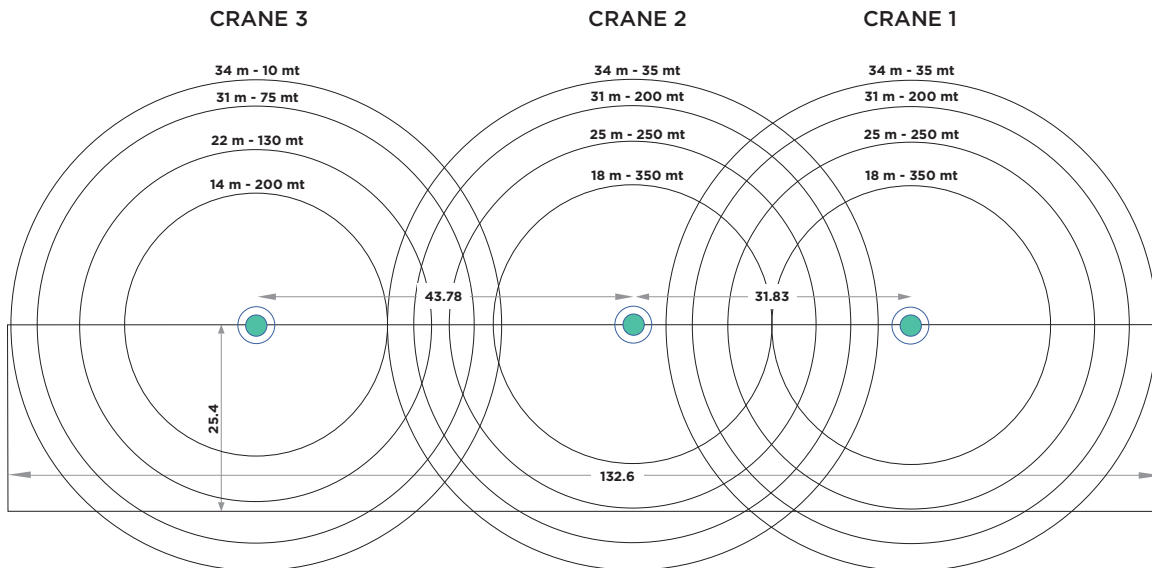
VESSEL EQUIPPED WITH TWIN SCREW AND 1X BOW THRUSTER

## COMBI DOCK TYPE

### TWEEN DECK / TANKTOP



### WEATHER DECK



### HOLD

